

MOBILE HD MAPPING SYSTEM

PolyMapper HS



Figure 1. PolyMapper HS 360

PolyMapper HS is a sought-after mobile system for HD mapping. It boasts a high performance 360° LiDAR, a front view industrial camera and a tightly-coupled GNSS/INS with an optional panoramic camera to meet various market needs. It provides a turn-key solution to capture 3D mass data of the road and the surroundings and to deliver mapping results up to centimeter-level accuracy. With the foldable antenna arms, it is designed for easy installation by a single person in different vehicles. Equipped with a GPU, the PolyMapper HS features a real-time 3D point cloud generation with high precision. With the cloud-based HD mapping platform and AI-based feature extraction software, it enables users to edit the map data and generate desired features in standardized formats. This is truly a state-of-the-art mapping system.

FEATURES

- Fully calibrated high accuracy, high precision point cloud generation
- Real-time 3D point cloud
- HD mapping at centimeter-level accuracy
- Front view industrial camera with global shutter
- Dual antennas with foldable antenna arms
- Customizable onboard data storage, 2 TB by default
- Support accessories: Ethernet, UART, DMI/PPS
- System options
 - PolyMapper HS (Figure 2)
 - PolyMapper HS 360 (Figure 1, panoramic camera integrated)

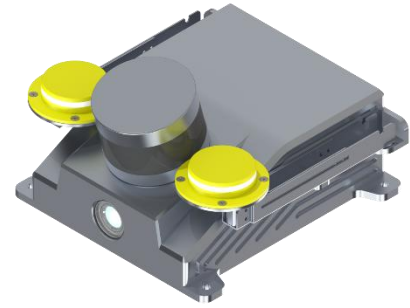
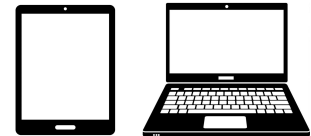


Figure 2. PolyMapper HS, antenna arm folded

SOFTWARE

- Easy to use control software PolyScanner, compatible with tablet and PC
- Post-processing software
 - 3D cloud point generation
 - Noise suppression unit, automatic colorization
 - Geo-annotated LAS file, imagery, trajectory and status
- Optional post-processing software
 - AI-based feature extraction software
 - Cloud-based platform for HD mapping



APPLICATIONS

- High precision map collection
- Road Asset Management
- Robotics
- Urban landscaping
- Smart transportation



Visit www.polyexplore.com for more information.

High-Performance, Cost-Effective Navigation & Mapping Solutions.

PolyExplore Inc.

2210 O'Toole Ave, Suite 240, San Jose, CA 95131
contact@polyexplore.com

REV. 1.00

SYSTEM SPECIFICATIONS

MOBILE HD MAPPING SYSTEM PolyMapper HS

LiDAR

Range	0.05 to 120 m
Range Capability	80 m @10% reflectivity (Channels 5 -12) 50 m @10% (Channels 1 to 4, 13, 16)
Range Accuracy	±1 cm (typical) ±2 cm (standard)
Range Precision	0.5 cm (typical, 1σ) 2 cm (standard)
FOV (Horizontal)	360°
Resolution (Horizontal)	0.09° (5 Hz), 0.18° (10 Hz), 0.36° (20 Hz)
FOV (Vertical)	30° (-15° to +15°)
Resolution (Vertical)	2°
Frame Rate	5 Hz, 10 Hz, 20 Hz
Returns	Single Return (Last, Strongest, First) Dual Return

GNSS/INS

Constellations	GPS/GLONASS/Beidou/Galileo
Satellite Signals	L1, L2, L5
Measurement Rate	100 Hz
Accuracy	
Position	1.5 m CEP SPS, 0.02 m RTK
Velocity	0.03 m/s
Pitch/Roll	0.005°
Heading	0.03°

PANORAMIC CAMERA

Resolution	7680 x 3840 (8K)
Frame Rate	Up to 30 fps
Photo File Format	JPEG/DNG

FRONT VIEW CAMERA

Shutter Type	Global Shutter
Resolution	2448 x 2048
Dynamic Range	72 dB

PHYSICAL, ENVIRONMENTAL & ELECTRICAL

Ingress	IP67
Weight	5.10 kg (panoramic camera not included) 7.15 kg (panoramic camera included)
Dimensions	310 mm x 230 mm x 175 mm (panoramic camera not included) 310 mm x 230 mm x 425 mm (panoramic camera included)
Temperature	-20°C to +40°C Operation -20°C to +50°C Storage
Power	12 VDC



Visit www.polyexplore.com for more information.

High-Performance, Cost-Effective Navigation & Mapping Solutions.

PolyExplore Inc.

2210 O'Toole Ave, Suite 240, San Jose, CA 95131
contact@polyexplore.com

REV. 1.00